

# Digidesign ASIO Driver 6.1.1 Usage Guide (Pro Tools LE Systems on Windows XP Only)

---

## Introduction

Digidesign ASIO Driver 6.1.1 is a single-client, multichannel sound driver that allows ASIO-compatible programs to record and play back through the following Digidesign audio interfaces:

- Digi 002 and Digi 002 Rack
- Digi 001
- Mbox
- Audiomedia III

Full-duplex recording and playback of 24-bit audio is supported at sample rates up to 96 kHz, depending on your Digidesign hardware and ASIO-compatible audio program.

The Digidesign ASIO Driver will provide up to 18 channels of I/O depending on your Pro Tools hardware:

- Up to 18 channels of I/O with Digi 002 and Digi 002 Rack (or 18 in and 16 out with S/PDIF Mirroring enabled)
- Up to 18 channels of I/O with Digi 001 (or 18 in and 16 out with S/PDIF Mirroring enabled)
- Up to 2 channels of I/O with Mbox and Audiomedia III systems



*Check the Digidesign Web site ([www.digidesign.com](http://www.digidesign.com)) for the latest third-party drivers for Pro Tools LE hardware, as well as current known issues.*

---

## Compatibility

The Digidesign ASIO Driver can be used on Digidesign-qualified Windows XP systems with Pro Tools LE 6.1.1 installed, or it can be used as a stand-alone driver on systems that do not have Pro Tools installed.


Digidesign can only assure compatibility and provide support for hardware and software it has tested and approved. For a list of Digidesign hardware systems, Digidesign-qualified computers, operating systems, and devices, and Digidesign-qualified third-party ASIO-compatible programs, refer to the latest compatibility information available on the Digidesign Web site ([www.digidesign.com/compato](http://www.digidesign.com/compato)).

---

## Installing the ASIO Driver

Digidesign ASIO 6.1.1 is automatically installed when you install Pro Tools LE 6.1.1. The following installation steps are for computer systems where ASIO Driver 6.1.1 was uninstalled, or Pro Tools LE 6.1.1 was not installed.

The Digidesign ASIO Driver can be installed on Digidesign-qualified Windows XP systems running Pro Tools LE 6.1.1, or it can be installed as a stand-alone driver on systems that do not have Pro Tools installed.

 *Digidesign ASIO Driver 6.1.1 is not supported on systems with Pro Tools 6.1 or lower installed. If Pro Tools 6.1 or lower is installed on your system, use the Add/Remove Programs Control Panel to remove it (or install Pro Tools LE 6.1.1).*

 *For complete instructions on installing Pro Tools LE, see the Getting Started Guide for your Pro Tools system.*

### To install the ASIO Driver:

- 1 Verify that your Pro Tools hardware is connected.
- 2 Power on your system.
- 3 If you intend to use Pro Tools on your system, verify that Pro Tools LE 6.1.1 is correctly installed and operational.
- 4 On the Pro Tools Installer CD, locate and double-click Digidesign ASIO Driver 6.1.1 Setup.exe.

– or –

From the Digidesign Web site, download and run Digidesign ASIO Driver 6.1.1 Setup.exe.

- 5 Follow the on-screen instructions to install the stand-alone ASIO Driver.
- 6 When installation is complete, click Finish to restart your computer.

### Removing the ASIO Driver

If you need to remove the ASIO Driver from your computer, complete the following steps.

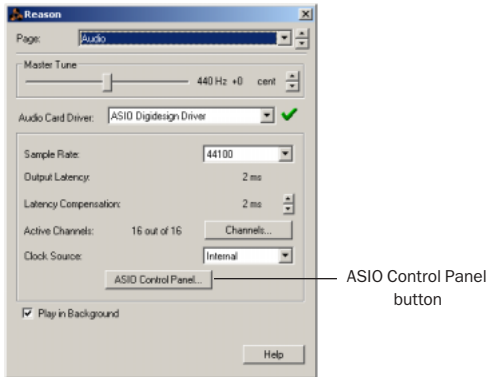
#### To remove the ASIO Driver:

- 1 Choose Start > Control Panel.
- 2 Double-click the Add or Remove Programs icon.
- 3 From the Currently installed programs list, select Digidesign ASIO Driver.
- 4 Click the Change/Remove button.
- 5 Click OK to remove the ASIO Driver.

---

## Configuring ASIO Driver Settings

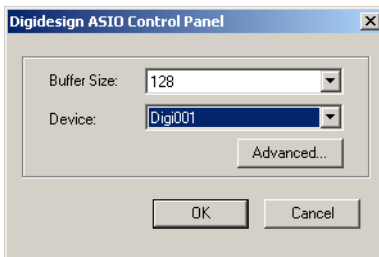
Configuring ASIO Driver settings is done in your third party ASIO program. See your program's documentation. For example, with Propellerhead Reason, click on the ASIO Control Panel.



Setup Example, using Propellerhead Reason

## ASIO Driver Control Panel

From the ASIO Driver Control Panel, you can configure the ASIO Driver for your Pro Tools system.



Digidesign ASIO Control Panel

The Digidesign ASIO Driver Control Panel cannot be accessed under the following circumstances:

- When Pro Tools is running.
- When playing or recording in an audio program that does not support the ASIO Driver.
- When using a third-party audio program that has an option to keep the ASIO Driver “open” even when you are not playing or recording. (You must close the audio program before you can open the ASIO Driver Control Panel.)

## Buffer Size Control

When you play a file from a client audio program, the client program divides the file into little chunks (buffers) and sends each of these to the ASIO Driver. The ASIO Driver copies the client program's buffers to your Digidesign hardware's own buffers in a double-buffering scheme. The Buffer Size control in this dialog lets you to set the size of each of the two buffers the ASIO Driver uses on Digidesign hardware. You may select from the following buffer sizes (depending on your Digidesign hardware):

- 128 samples
- 256 samples
- 512 samples
- 1024 samples
- 2048 samples

Small buffers have the advantage of low latency in the record monitor path. (Latency is the time delay between a signal entering the audio inputs and leaving the outputs during recording.)

Larger buffers have the advantage of making the Digidesign ASIO Driver more immune to audio dropouts during playback and recording.

In some ASIO-compatible audio programs, performing various tasks will interrupt the ASIO Driver and may result in clicks and pops in audio playback or recording. Choosing medium or large buffers (such as 256, 512, or 1024) can help alleviate this problem.

Changing the Buffer Size for the Digidesign ASIO Driver does not affect the H/W Buffer Size settings in the Pro Tools Playback Engine dialog.

## **Device**

The Device Type will always be set to your installed Pro Tools hardware.

## **Advanced Button**

The Advanced button opens the Hardware Setup dialog for the Digidesign hardware that you are using. Refer to the *Getting Started Guide* for your Digidesign hardware.