

Pro Tools TDM 5.3 R4 Update for Pro Tools|HD (Macintosh Systems Only)

- Provides the following fix for both the 192 Digital I/O and 192 I/O

Addendum to the 192 Digital I/O and 192 I/O Guides

The following item was omitted from the *192 Digital I/O* and *192 I/O Guides*.

Connecting DA-88 and Compatible Decks to the 192 Digital I/O or 192 I/O

The Pro Tools Hardware Setup dialog now features a checkbox to support DA-88 and TDIF-1 word clock standards.

TDIF-1 Word Clock This checkbox changes the I/O's Word Clock output to conform to TDIF-1 word clock standards. This choice is only available when the session sample rate is 48 kHz or lower and when the Ext. Clock Output port (to the right) is set for Word Clock output.

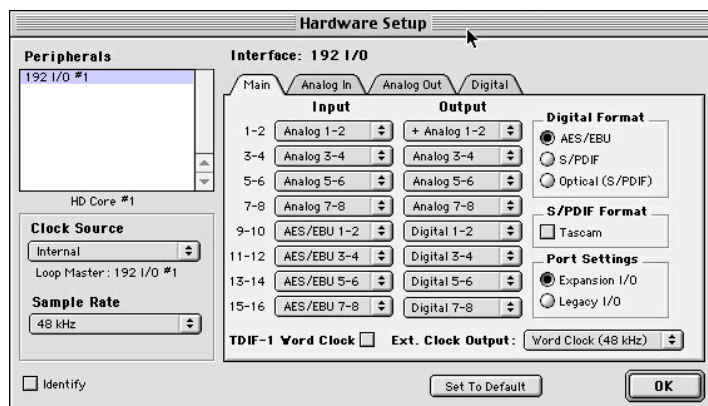


Figure 1. New Hardware Setup Dialog, with TDIF Word Clock checkbox

To transfer information to a Tascam DA-88 across TDIF:

- 1 Install a 75-ohm BNC shunt terminator on the Word Sync Input of the DA-88, using either a "T" or an in-line terminator. (The DA-88 will not lock to the Word Clock output of the 192 Digital I/O or 192 I/O without a terminator in place)
- 2 Connect the Ext. Clock output cable from the 192 Digital I/O or 192 I/O to the Word Sync Input of the DA-88.
- 3 Set the Tascam DA-88 clock mode for Word Clock.
- 4 In Pro Tools, choose **Setup > Hardware**.
- 5 Follow the Hardware Setup configuration steps in the *192 Digital I/O* or *192 I/O Guide* to set up your audio interface.
- 6 From the Ext. Clock Output pop-up menu, select **Word Clock**.
- 7 Check the TDIF-1 Word Clock mode checkbox in the Pro Tools Hardware Setup dialog. This checkbox changes the Word Clock output of the 192 Digital I/O or 192 I/O to conform to TDIF-1 word clock standards. This checkbox is only available at 44.1 or 48 kHz sample rates.

Also Includes the Following Fixes

From Pro Tools 5.3cs2: Fix for a problem with MachineControl where control of the 9-pin deck may have failed if using the SYNC I/O serial ports

When using the MachineControl option to control a 9-pin deck connected to either of the SYNC I/O's 9-pin ports, if Pro Tools transport is set to "Transport = Pro Tools," the 9-pin deck did not consistently locate properly when given a play command. Instead of the deck locating to the pre-roll position and starting playback after playback was started in Pro Tools, the deck did not always locate to the pre-roll position properly, so the play command was never executed. This problem did not occur if the 9-pin deck was connected using a compatible Modem-to-Serial or USB-to-Serial Converter.

From Pro Tools 5.3cs1: Fix for Incorrect Undo Queue Clearing when Spotting into Pro Tools from certain Third Party Applications

With Pro Tools TDM 5.3, spotting regions from third party applications (such as Gallery's SampleSearch and Soundminer Inc.'s Soundminer), into Pro Tools TDM 5.3 would cause the Undo queue to be incorrectly cleared. Consequently any preceding changes that were not saved before spotting into Pro Tools were lost. Pro Tools TDM 5.3cs1 corrects this problem.